

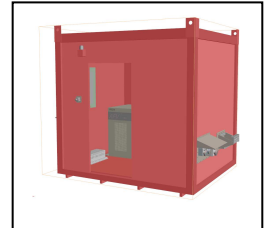
Product DataSheet:

FSPS – Field Shelter Power Supply

The FSPS is a power supply system generating three voltages programmable 3PH 60Hz and 400Hz power supplies starting from the 3PH 400V 50Hz network.

The FSPS is integrated in an air-conditioned field shelter equipped with input and output electrical panels and input filter for compliance with EN61000-3-12.

REACH, ROHS and CE marking compliance.



Key Specifications:

- Rugged field power supply shelter
- Three output voltage programmable power supplies, 3PH 60Hz and 400Hz up to 15kVA
- Input filter to meet compliance to EN61000-3-12
- Industrial IP66/IP67 standard connectors (EN60309)
- Magneto thermic and differential protection, internal and external emergency switches
- Air conditioning to allows controlled internal temperature while 0 to +40°C external temperature
- No internal/external air exchange to ensure operation in presence of dust, humidity and salt fog
- Lifted by four eyebolts, can be transported on trucks
- REACH, ROHS and CE marking compliance
- Dimensions (h x l x d) 2400x2800x2400 (mm)
- Weight 1670 kg

INPUT POWER

3PH 400V 50Hz
25Arms max
17KVA max

INPUT HARMONIC DISTORSION

Compliant EN61000-3-12

INPUT/OUTPUT PROTECTION

Magnetothermic and differential protection.
SPD in input and varistors on output line

ISOLATION

1500Vdc input to chassis
1500Vdc output to chassis
1500Vdc input to output

OUTPUT

Three programmable output voltage power supply:

- 3PH 0÷310V 10kVA 400Hz
- 3PH 0÷310V 5kVA 60Hz
- 3PH 0÷310V 15kVA 60Hz

INTERNAL POWER DISSIPATION

Up to 3600W to have $T_i < 40^\circ\text{C}$

OPERATING TEMPERATURE

$T_a [0 \div +40]^\circ\text{C}$

COOLING

Air cooling system (12.000BTU)

ENVIRONMENT PROTECTION

Steel sheltered without external air exchange, suitable for outdoor placement

INDICATORS

Power presence
System status
Internal power supply status

CONNECTOR

Standard EN60309 IP66/IP67

DIMENSIONS (h x l x d)

2400x2800x2400 (mm)

WEIGHT

1670 Kg

COMPLIANCE

REACH, ROHS and CE marking